

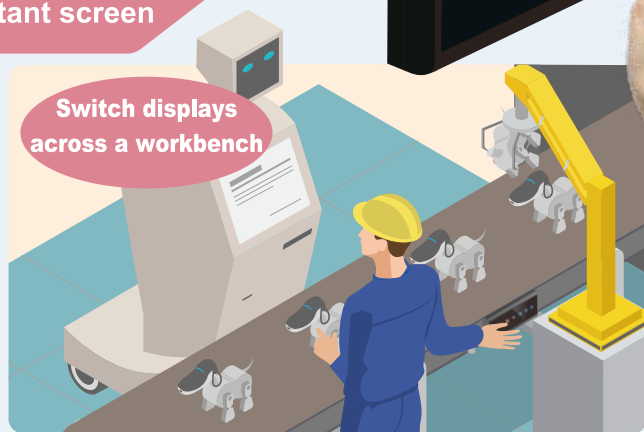
*New breakthrough touchless gesture-based control*

# Infrared Gesture HG Unit - New Release!

*The perfect solution for applications where clean hands and machine hygiene matter!*

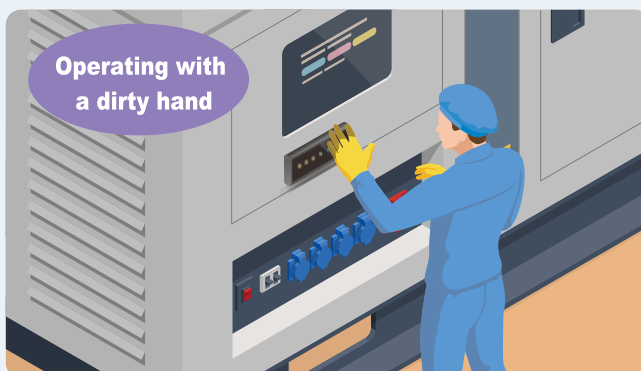
## SCENE / 01

Operating a distant screen



## SCENE / 02

Avoiding touch operation



# Easily configure and customize in just a few steps!

## No-code user setup!



You can check the registered patterns with the playback button!

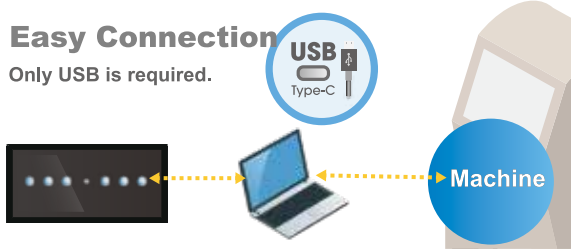
### Tool Settings

- ▶ LED display color
- ▶ LED display direction
- ▶ Sensitivity adjustment
- ▶ Temporary lock setting
- ▶ And more....

## Perfect for industrial, commercial, EV, and MedTech applications!

### Easy Connection

Only USB is required.



### Dustproof/Waterproof

Suitable for use in dusty and humid environments with IP65-equivalent dustproof and waterproof construction



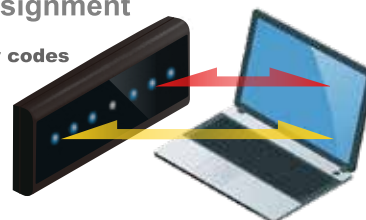
### Easy Installation

Easy installation with  $\Phi 22.3\text{mm}$  switch hole. Ideal for retrofitting existing equipment in operation.



### Key Code Assignment

Easily assign key codes to gestures.



## Touch-less series

## Hand Gesture Unit HG

Model	HG-RL6U2C01
External dimensions (excluding protrusions)	130(W)x 60(H)x16(D)mm
Unit color	Black
Mass (body)	Approx.110g
Power supply voltage	DC5V
Sensing method	Infrared
Operation method	Hand gesture
Detection distance	0 ~ 15cm (Recommended distance: 5 ~ 15cm)
Detection angle (diagonal)	60°

\*The connecting cable is not included. \*Please contact our sales for details.

Ambient operating temperature	0 ~ 55°C
Ambient operating humidity	10 ~ 80%RH
Ambient storage temperature	-20 ~ +60°C
Ambient storage humidity	10 ~ 80%RH
Panel cut-out dimensions	$\Phi 22.3+0.3/-0\text{mm}$
Interface	USB Type C
Protective Structure (front side of panel installation)	IP65 equivalent
LED	RGB-24bit 6pcs
Compatible Standards	CE UL FCC