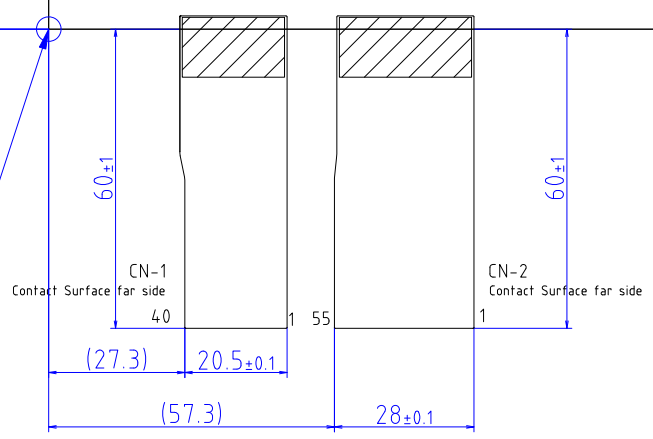
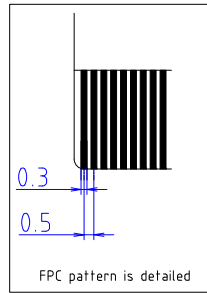


CN-1 PinOut		CN-2 PinOut	
1	Dummy	1	NC
2	Y26	2	NC
3	Y25	3	NC
4	Y24	4	NC
5	Y23	5	NC
6	Y22	6	NC
7	Y21	7	Dummy
8	Y20	8	X46
9	Y19	9	X45
10	Y18	10	X44
11	Y17	11	X43
12	Y16	12	X42
13	Y15	13	X41
14	Y14	14	X40
15	Y13	15	X39
16	Y12	16	X38
17	Y11	17	X37
18	Y10	18	X36
19	Y09	19	X35
20	Y08	20	X34
21	Y07	21	X33
22	Y06	22	X32
23	Y05	23	X31
24	Y04	24	X30
25	Y03	25	X29
26	Y02	26	X28
27	Y01	27	X27
28	Y00	28	X26
29	Dummy	29	X25
30	NC	30	X24
31	NC	31	X23
32	NC	32	X22
33	NC	33	X21
34	NC	34	X20
35	NC	35	X19
36	NC	36	X18
37	NC	37	X17
38	NC	38	X16
39	NC	39	X15
40	NC	40	X14
		41	X13
		42	X12
		43	X11
		44	X10
		45	X09
		46	X08
		47	X07
		48	X06
		49	X05
		50	X04
		51	X03
		52	X02
		53	X01
		54	X00
		55	Dummy



REMARKS		
FPC PATTERN PITCH		0.5mm
FPC PATTERN WIDTH	Cu	0.2-0.3mm
	-	mm
CIRCUIT PATTERN WIDTH	Ag	0.075mm
	-	mm
O TOLERANCE=±0.3mm		

ITEM	MATERIAL	REMARKS
1	TOP ITO GLASS	t=1.1mm
2	BOTTOM ITO GLASS	t=1.1mm
3	FPC	POLYIMIDE 12.5μm
4	REINFORCEMENT FILM	POLYIMIDE 25μm
5	STIFFENER	POLYIMIDE 225μm
6	ADHESIVE SHEET	150μm
7	PROTECTION TAPE	POLYESTER 25μm



TOLERANCE=±0.3mm
EXCEPT WHERE INDICATED
UNIT=mm

PART No.	DATE
DUS-A133WA060B/FH	Jun/07/2022
TYPE	DMC Co., Ltd.
Projected Capacitive DIMENSIONAL DRAWING	